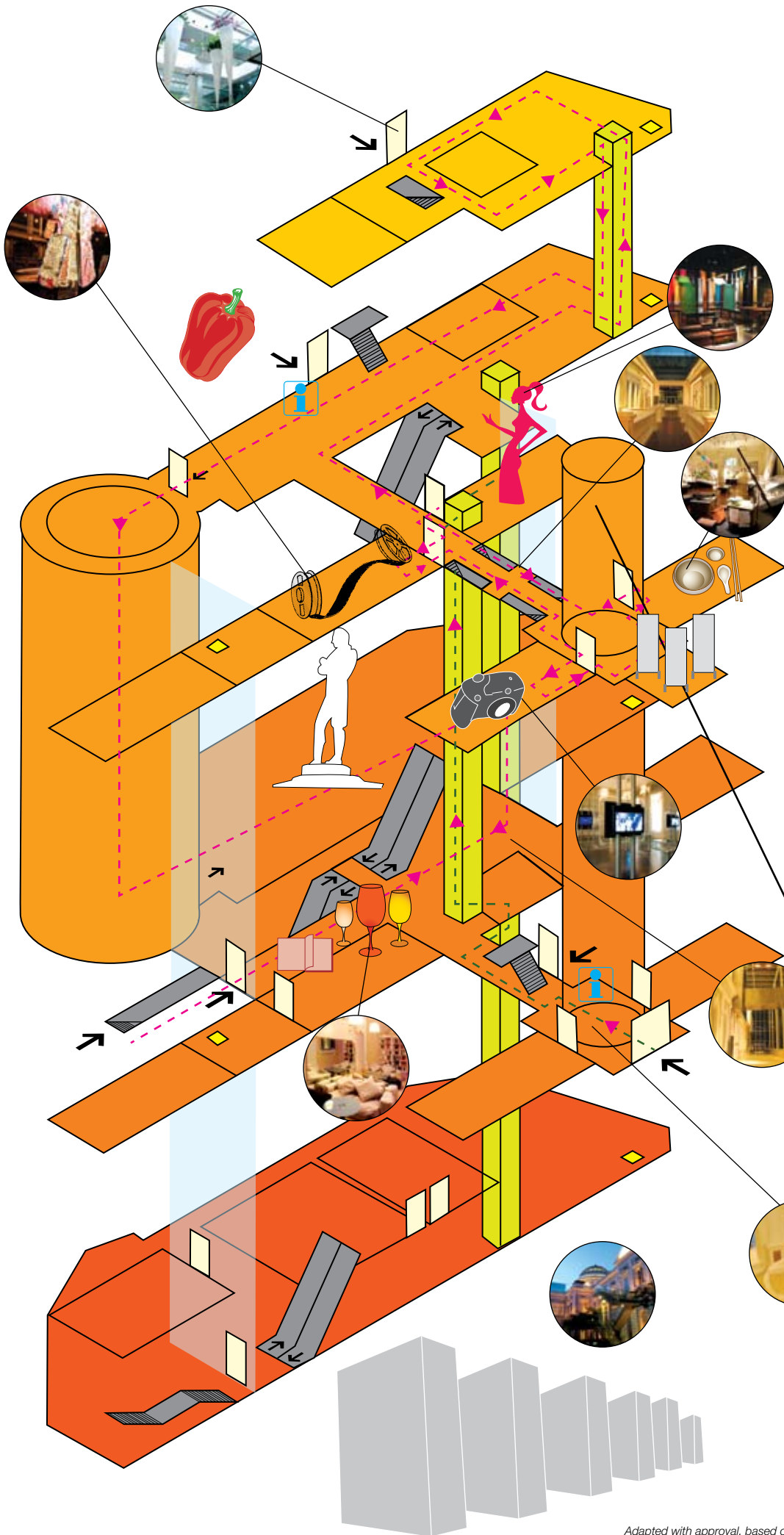


NATIONAL MUSEUM LEGEND

-  Novus / WA Café-Bar
-  Stamford Greens
-  Information Counter
-  Novus Restaurant & Bar
-  History Gallery
-  Living Galleries: Photography
-  Living galleries: Food
-  Living Galleries: Fashion
-  Living Galleries: Film
-  The Balcony
-  Canning Entrance
-  Suggested Route



NATIONAL MUSEUM OF SINGAPORE



1. Novus / WA Café-Bar

Start your trip with a good cuppa and a slice of rich homemade black forest cake (at Novus) or freshly baked pastries (at WA) for high tea at 5pm. Enjoy a bit of light reading in the evening glow at the concourse area. An hour spent in leisurely fashion will start your trip on the right note.



2. Stamford Greens / Sculptures

When you've had your fill, swing round to the left wing of the museum where you can appreciate sculptures like *Seeds*, *20 Tonnes*, and *Transformation*, created by renowned artists Han Sai Por and Tan Teng Kee. (Other sculptures are located at the lawn near the Canning entrance on level three).



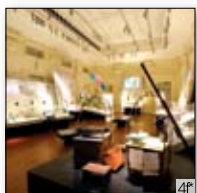
3. Information counter

Pick up a few brochures to acquaint yourself with the current and ongoing exhibitions, as well as a museum map lest you lose your way in the vastness of the premise. While at the foyer, you can also enjoy a good view of the Dome, and familiarise yourself with the toilet locations, mostly at the two ends of the long corridor on each level.



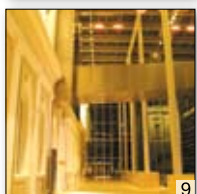
4. Living Galleries

Skip the stairs and take the nearest lift up to the second storey which houses the four Living Galleries as well as the Balcony where special exhibitions and events are sometimes held. Entrance to the galleries cost \$30 for a family of five, including three adults and two children. Admission is free after 6pm (last entry at 8.4pm) so that's the best time to visit if you want to keep your trip wallet-friendly. Remember that no photography or videography is allowed though. But you can set up your easel and paint like Van Gogh if you like.



a. Living Galleries: Fashion

As you exit the lift, take a right and enter the Fashion gallery cautiously. The gantry entrance is narrow and twin prams will certainly not make it through. Once inside, you can roam your buggy freely around the spacious carpeted gallery. In the first part of the gallery, you can gawk or awe at the fashion en vogue of the 1950s and the 1960s, and listen to audio explanations of each passing era. The second part of the gallery is a fabric room where you can look through magnifying glass for close-ups of fabric textures, and learn about tapestry as you listen to the ambient sound of sewing machines humming away. Watch your step near the parquet platform at the display stands.



b. Living Galleries: Film

Cross over to the Film gallery where you will be greeted by a rouge red theatre-



like room. Park your pram in the aisle or the front of the audience stands, and enjoy a run of the old films on show. Walk up the side ramp and feel small beside the gigantic 1950s film projector. Browse through movie memorabilia and listen to oldies from the gramophone. The second half of the gallery features a large glove puppet stage and wayang exhibits like hand puppets. The Chinese opera costumes and prop displays are a must-see at the Film gallery. The glitz and glamour of the headsets and weapons will

c. Glass Passage

Amble down the Glass Passage where you will be able to take a second look at the dome. Watch your step as the parquet flooring gets a little uneven at the end of the passageway. The best time to view the beauty of the French-style stained glass windows, made up of 50 such panels, is at sundown.

d. Living Galleries: Photography

Keep right and enter the third Living Gallery. Look through a photographer's lens and explore how families have evolved over the years. Be greeted by large format digital prints and displays of wedding ornaments and jewellery. In part two of the gallery, take a seat in one of the antique chairs and flip through some old photo albums of Singapore. You can also check out film equipment, old photos and even daguerreotypes of Singapore town (circa 1844-45).

e. The Balcony

Once out of the Photography gallery, make a right and head for The Balcony where you might catch a special exhibition on display.

f. Living galleries: Food

Head on further and you will come upon the last Living Gallery where Singaporeans' most-loved activity, eating, is best displayed through the exhibits of local street food. You can immediately experience digitally simulated smells of food as you walk through exhibits on how local delights like char kway teow, laksa, and kueh tutu are made. The second segment of the gallery features rows of jars where you can interactively pull a ring and get a whiff of the spices in the containers. Enjoy a special ensemble resembling the sound of cutlery clattering. While you are here, smell the world's most expensive spice, the cardamom; locate the Greater Galangale, a real ginger respiring in the jar; and play the Kitchen Curiosities game.

5. Glass Atrium

Head back down the glass passage, past the Living Galleries, and you will reach the Glass Atrium. At the end of the walkway, you can take a third view of

the Dome behind you. This is the start of the new extension block of the museum, made entirely out of self-supporting structures. Take a right where you will be greeted by cornucopia vases of blooms hanging from the ceiling.

6. Canning Entrance

On exiting the Canning Entrance, you can see one of sculptor Kumari Nahappan's works, a bronze cast of an enormous chilli entitled *Pedas-Pedas*.

7. Glass Rotunda

On the right of the Canning Entrance is the Glass Rotunda, also the only entrance to the History Gallery. The rotunda measures 15m in height and 24m in diameter, spiraling two storeys down to the gallery on the ground floor. As you wind down the pathway, experience a 360-degree video screening of modern Singapore. Take it slow or you might end up feeling dizzy.

8. History Gallery

On your way in to the History Gallery, pick up a free interactive audio visual guide known as the Companion. You can read and listen about the artefacts you are about to see in the gallery. Choose between two routes as you begin your journey: events and person. Both will take you through major historical events of Singapore, as well as national treasures such as the Singapore Stone. Entrance to the History Gallery is \$30 for a family of five, including three adults and two children. The last entry is at 5.30pm.

9. The Concourse

At the Concourse, enjoy a multimedia video installation, entitled *The Building Remembers/Remembering the Building*, created by multimedia artist Matthew Ngui. The large concrete video wall resembles a large fountain from afar, thus making the sparse square a good spot for quiet contemplation or feeding your baby.

10. Novus Restaurant & Bar

It's dinner time! Novus Restaurant & Bar does European cuisine with a modern twist. The restaurant offers alfresco dining in the courtyard where you can enjoy a splendid night view of the museum.

11. Museum by night

What better way is there to wrap up your museum tour than to take in the night view of this majestic building?